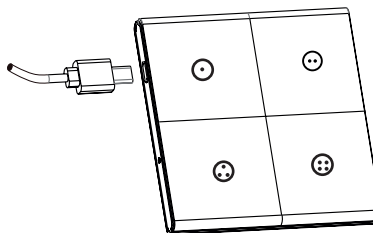




- Requires Tuya Zigbee Gateway to use
- Two-in-one remote can be used as a scene switch to control smart home devices, or as a dimmer switch.
- Press, double press and hold for each button when used in Scene Switch mode.
- Magnetic mounting plate to fix to wall or lay flat on surface.
- 86mm x 88mm x 10mm

## Getting Started - Charging the device



1. Use a USB-C charger to charge the remote.
2. The LED at button 3 will glow red to indicate charging. A full charge typically takes 4 hours.
3. When charging is complete the LED at button 3 will glow green.

1

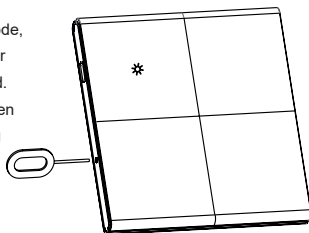
2

## Smart Life

- Please ensure that you have downloaded the Smart Life app, and set up an account.
- A Tuya Zigbee Gateway must already be connected to your Smart Life system before you can pair the device.

## Pairing to Smart Life

1. To put the device in pairing mode, press and hold the reset button for 10 seconds using the pin supplied. The LED at button 1 will blink green to indicate the remote is in pairing mode.



2. In the Smart Life app choose to add a device by tapping the (+) icon in the top right of the app's home screen, and select "Add Device". Smart Life will then automatically discover your remote.
3. When the remote appears on the list select "Add" and then "Next" and then you can rename your remote to "Candeo Modmote" or something else of your choosing. Select "Done".

3

## Using as a Scene Switch (Primary function)

1. To use as a Scene Switch, select the remote within the Smart Life app, and select Device Trigger from within the function menu (bottom right button).
2. From here you can create multi-device actions for each button using the "Create Intelligence" option. You will be able to program different actions for single press, double press, and hold (4 seconds).

## Using as a Dimmer Switch

The Candeo Modmote can also be used as a dimmer switch with zigbee lights.

1. To use as a Dimmer Switch, ensure that you have paired both the remote and the zigbee lights you want to control.
2. Open the Modmote in the Smart Life app and select Remote Dimming from function menu.
3. Hold down button 1 for 10 seconds until the icon starts flashing green.
4. Choose Add Smart Lights and "Go to add"
5. Select the lights you want to add, and select Save
6. Button 1 will now turn the lights on; Button 2 = off; Button 3 = increase brightness; button 4 = decrease brightness.

4

## Switching Mode

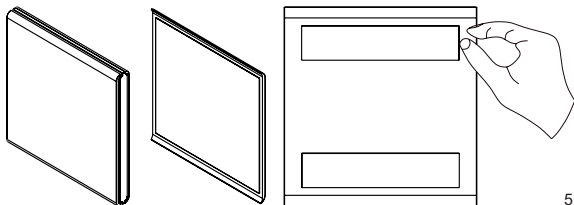
1. To switch the mode of the Modmote from Dimming mode to Scene Switch mode (and vice versa), hold down buttons 3 and 4 for 10 seconds, until button 1 flashes green.

2. Wait for 5 seconds before pressing any button, and the remote will switch modes.

## Installation

1. The Modmote is fitted with a magnetic back plate than can be fixed to any flat surface using the 3M tape attached. Simply remove the cover of the tape and fix the back plate in your desired location.

2. The remote can then be placed on the back plate, and removed as you wish.



## Changing the buttons

Candeo offers a range of alternative choices for the buttons on the Modmote, allowing you to change them to suit your requirements.

You can remove the button tiles by lifting gently on the outside lip of the button tile, with the base of your palm positioned on the centre of the remote to hold it steady.

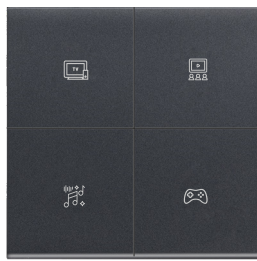
Replacement button tiles can be attached to the remote by positioning the fixings closest to the edge of the device first, and then snapping the button tile into place towards the centre of the device.

Please go to [www.candeo.io](http://www.candeo.io) to see the range of options available.

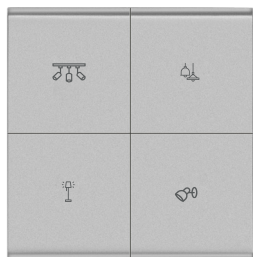
6



Icon Pack 1 - in silver white



Icon Pack 2 - in black



Icon Pack 3 - in grey



Blank pack - in white

7

## Notes

- Smart Life is a free app provided by Tuya. We cannot control or influence the contents of the app, or the update schedule. Should Tuya update the app in a way that the above instructions become inaccurate please do look for up to date instructions at [www.candeo.io](http://www.candeo.io).
- Integration with other zigbee platforms may be possible. This requires custom device handlers and drivers, and is recommended for advanced users only. Instructions for each platform may be found in the community forums for your chosen platform, or on our website. Instructions for Smarthings device handlers and Edge drivers can be found at [www.candeo.io](http://www.candeo.io).
- Downloadable instructions in a larger typeface are available at [www.candeo.io](http://www.candeo.io) if required.

8